

# Inspirational WCs and **Installation Systems**



Roca Installation Systems

**Roca**



**Roca**

# Roca installation systems

## Introduction

Installation systems are a fundamental part of the bathroom. Roca installation systems offer an affordable solution when a practical, hygienic and modern bathroom design is called for. A wide range of different installation options are available, allowing easy install of wall-hung and back-to-wall WCs along with bidets and basins.

Compact and low height solutions are available to suit all bathroom spaces. Finish the look from a choice of various different operating panels, including two new electronic options which can be programmed as per your requirement.

With a choice of twenty-five wall-hung and seventeen back-to-wall WCs to choose from there is a wide variety of styles from modern to traditional available. New to the collection is In-Wash® Inspira our first innovative Smart WC.

---

### What is an installation system?

An installation system is a concealed cistern which is installed behind the wall and hidden away from the visual eye after installation. The use of an installation system will transform the look of any bathroom space, modernising rooms and visually enlarging spaces by removing the use of a traditional ceramic cistern.

---

### How does an installation system work?

Installation systems work exactly the same as traditional ceramic cisterns, the operating panel flushes the WC with the press of a button. An installation system gives you the option to personalise the look of your WC with the choice of different operating panel designs available in various different colour finishes.

---

### How are installation systems maintained after installation?

The operating panels which operate the flush of the WC can be easily unclipped which allows access to the cistern internals to carry out general maintenance required.

All Roca installation systems offer a 5 year guarantee on the cistern\* and a 10 year guarantee on the frame.

---

\* Including concealed cistern internals, excluding diaphragm washer.

Roca withhold the right to withdraw products and amend prices at any time, prices inclusive of VAT are listed within brackets (). Images featured are for illustrative purposes only. For full technical specifications please visit our website [www.uk.roca.com](http://www.uk.roca.com) to download technical drawings, view installation videos and installation manuals. Dimensions are in mm, due to manufacturing processes all dimensions are approximate.

Roca Ltd. has made every effort to ensure that the information provided within this brochure is accurate, however Roca Ltd. cannot guarantee this and accepts no liability for any information printed within this brochure.



Duplo WC Compact and Dama-N wall-hung WC

# Designing your bathroom

Choosing your WC, installation system and operating panel

## Use these three easy steps to design your new WC

---

### #1 Choose your WC

pg. 4-17



Wall-hung



Back-to-wall

Wall-hung or back-to-wall (floor-standing) options are fully compatible with Roca's installation systems, choose your WC depending on your style and desired finished look.

### #2 Choose your installation system

pg. 18-25



There are various different installation systems available suiting wall-hung or back-to-wall WCs. When you have chosen your WC, choose an installation system which best suits your bathroom space, there are standard, compact and under-window solutions available suiting any bathroom installation.

### #3 Choose your operating panel

pg. 26-30



Finish the look of your bathroom with the operating panel, the final visible component after installation. Choose a traditional push-button operating panel or a new electronic operating panel which can be programmed to flush automatically after using the WC.



# #1 Choose your WC

## Wall-hung options

Modernise bathroom spaces with the addition of a wall-hung WC pan. Fully compatible with Roca's installation systems, the pans are safely secured to a robust steel frame which is installed behind the wall.



Inspira Round wall-hung WC with PL1 operating panel



Dama-N wall-hung WC with PL1 operating panel



04 Meridian-N wall-hung WC with PL6 operating panel



The Gap rimless wall-hung WC with PL2 operating panel

## Back-to-wall options

Floor-standing WC pans offer a seamless finished look to any bathroom space thanks to the concealed cistern which is installed behind the wall, hidden away from the visual eye.



Hall back-to-wall WC with PL2 operating panel



Meridian-N comfort height back-to-wall WC with PL1 operating panel



Dama-N back-to-wall WC with PL4 operating panel



Aire back-to-wall WC with PL4 operating panel





In-Wash® Inspira wall-hung WC with PL2 operating panel

# Wall-hung WCs

## **N** New products

New wall-hung WCs have been added to the Aire, Debba and Inspira bathroom ranges.

### **ECO WCs**

With water-saving in mind the new Debba and Inspira WCs can be flushed at 4.5/3 litres, saving water and reducing annual household utility bills.

### **Hidden fixations**

Inspira wall-hung WC pans benefit from a smooth, seamless design thanks to the hidden fixations which are located underneath the pan, improving design aesthetics.



Inspira Round



Inspira Square

## Smart WC

Comfort and hygiene come together to provide a unique experience with the In-Wash® Inspira Smart wall-hung WC.

### **Smart, efficient and reliable**

Every single detail of the In-Wash® Inspira WC has been designed with a clear purpose: to bring home the most advanced, practical and pleasant toilet ever created. A remote control, night light, adjustable water and air temperature, self-cleaning nozzle, user detection technology, hidden fixations and rimless pan are just a few of the advanced features this Smart WC has to offer.



## Rimless

The new generation of Roca rimless toilets represents the best in innovative design and new flushing technology.

Rimless WCs have been extended into the Debba, Inspira, Nexo and The Gap ranges.

### **Easy to clean**

The removal of the rim simplifies the design offering a smooth surface which is easier to clean.

### **Optimal flushing**

The distributor flushes the water around the pan providing a thorough flush which exceeds European standards.

### **Hygienic solution**

Bacteria growth is discouraged thanks to the removal of the rim from the design.



# Wall-hung WCs

## Smart WC

### In-Wash® Inspira Smart WC

N



803060002 WC pan and soft-close seat **£1,999.00 (£2,399.00)**

*Note: In-Wash® Inspira is compatible with Duplo WC smart installation system only*

## Rimless wall-hung WCs

### Inspira Square Rimless

N



346537000 WC pan **£496.65 (£596.00)**

80153200B Soft-close seat **£191.89 (£230.00)**

### Inspira Round Compact Rimless

N



346528000 WC pan **£494.50 (£593.00)**

80152C00B Soft-close seat **£169.31 (£203.00)**

### Inspira Round Rimless

N



346527000 WC pan **£474.08 (£569.00)**

80152200B Soft-close seat **£169.31 (£203.00)**

### The Gap Rimless



34647L000 WC pan **£283.22 (£340.00)**

801472004 Soft-close seat **£105.81 (£127.00)**

801470004 Standard seat **£80.08 (£96.00)**

### Nexo Rimless



34664L000 WC pan **£269.06 (£323.00)**

80164B004 Soft-close seat **£98.98 (£119.00)**

801640004 Standard seat **£76.12 (£91.00)**

### Debba Rimless

N



34699L000 WC pan **£305.87 (£367.00)**

801992004 Soft-close seat **£98.82 (£119.00)**

801990004 Standard Seat **£56.77 (£68.00)**

### Debba Round Rimless

N



346998000 WC pan **£236.77 (£284.00)**

801B2200B Soft-close seat **£98.82 (£119.00)**

801B2000B Standard seat **£56.77 (£68.00)**





Rimless



Soft-close seat



4.5/3 litre flush



6/3 litre flush



New Product

Note: WC height dimensions state the recommended installation height. Where applicable, height dimensions for the WC pans do not include the seat dimensions. Due to manufacturing processes all dimensions are approximate. Dimensions in mm.

## Wall-hung WCs

### Element



346577000 WC pan **£544.44 (£653.00)**  
801572004 Soft-close seat **£189.73 (£228.00)**

### Khroma



346657000 WC pan **£511.44 (£614.00)**  
801652F3T Soft-close seat (red) **£254.92 (£306.00)**  
801652004 Soft-close seat (white) **£212.43 (£255.00)**

### Meridian-N



346247000 WC pan **£527.94 (£634.00)**  
8012A2004 Soft-close seat **£127.45 (£153.00)**  
8012A0004 Standard seat **£94.36 (£113.00)**

### Meridian-N Compact



346248000 WC pan **£502.76 (£603.00)**  
8012AC004 Soft-close seat **£127.45 (£153.00)**  
8012AB004 Standard seat **£94.36 (£113.00)**

### Hall Compact



346627000 WC pan **£500.44 (£601.00)**  
801622004 Soft-close seat **£130.01 (£156.00)**  
801620004 Standard seat **£136.51 (£164.00)**

### Hall



34662E000 WC pan **£456.45 (£548.00)**  
80162C004 Soft-close seat **£130.01 (£156.00)**

### Dama-N Compact



346788000 WC pan **£487.99 (£586.00)**  
80178C004 Soft-close seat **£126.61 (£152.00)**  
80178B004 Standard seat **£105.50 (£127.00)**

### Dama-N



346787000 WC pan **£439.95 (£528.00)**  
801782004 Soft-close seat **£126.61 (£152.00)**  
801780004 Standard seat **£105.50 (£127.00)**

# Wall-hung WCs



Rimless



Soft-close seat



4.5/3 litre flush



6/3 litre flush



New Product

Note: WC height dimensions state the recommended installation height. Where applicable, height dimensions for the WC pans do not include the seat dimensions. Due to manufacturing processes all dimensions are approximate. Dimensions in mm.

## Wall-hung WCs

### Happening



346567000 WC pan £494.94 (£594.00)  
801562004 Soft-close seat £148.17 (£178.00)

### Aire



3460F7000 WC pan £461.95 (£554.00)  
801B9200U Soft-close seat £82.49 (£99.00)

### Senso



346517000 WC pan £439.95 (£528.00)  
801512004 Soft-close seat £119.82 (£144.00)  
801511004 Standard seat £96.17 (£115.00)

### The Gap



346477000 WC pan £350.34 (£420.00)  
801472004 Soft-close seat £105.81 (£127.00)  
801470004 Standard seat £80.08 (£96.00)

### Access



346237000 WC pan £347.07 (£416.00)  
80123A004 Standard seat £90.26 (£108.00)  
80123D004 Open ring seat (no cover) £83.28 (£100.00)

### Nexo



346640000 WC pan £319.71 (£384.00)  
80164B004 Soft-close seat £98.98 (£119.00)  
801640004 Standard seat £76.12 (£91.00)

### Debba



346997000 WC pan £236.77 (£284.00)  
801992004 Soft-close seat £98.82 (£119.00)  
801990004 Standard seat £56.77 (£68.00)

### Laura



34630300S WC pan £213.71 (£256.00)  
8013SC005 Soft-close seat £80.70 (£97.00)  
8013U0004 Standard seat £46.36 (£56.00)



Inspira Round wall-hung WC with PL1 operating panel





Meridian-N comfort height WC with PL5 operating panel

# Back-to-wall WCs

## **N** New products

New back-to-wall WCs have been added to the Aire and Inspira bathroom ranges.

Aire, a soft and simple back-to-wall design which complements its sanitaryware collection.

Inspira Round, an ergonomic and versatile back-to-wall pan which has been designed to complement all round, soft and square basin options from the Inspira bathroom collection.



Aire

## Comfort height

Designed to sit higher than a standard WC pan with a raised height of 480mm to the top of the seat. Comfort height pans enhance well-being providing a solution for users who may suffer from back or joint problems, or may benefit from the use of a raised height pan without the need of a full DOC M accessible WC.

Available in two popular collections with distinct different designs, Meridian-N and The Gap provide comfort, not compromising on style.



480

The Gap



The Gap comfort height WC with PL5 operating panel

# Back-to-wall WCs



Aire back-to-wall WC with PL4 operating panel

## Comfort Height WCs

### Meridian-N Comfort Height



- 34724C00U WC pan £391.97 (£470.00)
- 8012A2004 Soft-close seat £127.45 (£153.00)
- 8012A0004 Standard seat £94.36 (£113.00)

### The Gap Comfort Height



- 34747C00U WC pan £283.22 (£340.00)
- 801472004 Soft-close seat £105.81 (£127.00)
- 801470004 Standard seat £80.08 (£96.00)





Comfort-height



Soft-close seat



4.5/3 litre flush



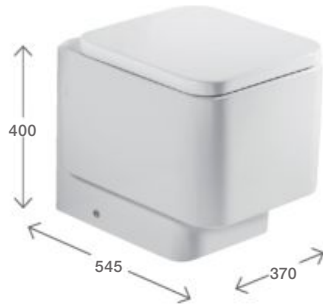
6/3 litre flush

Due to manufacturing processes all dimensions are approximate. Dimensions in mm.

Where applicable, height dimensions for the WC pan do not include the seat dimensions and wall-hung WCs include the recommended installation height.

## Back-to-wall WCs

### Element



347577000 WC pan £620.46 (£745.00)

801572004 Soft-close seat £189.73 (£228.00)

### Khroma



347657000 WC pan £538.15 (£646.00)

801652F3T Soft-close seat (red) £254.92 (£306.00)

801652004 Soft-close seat (white) £212.43 (£255.00)

### Happening



347567000 WC pan £477.30 (£573.00)

801562004 Soft-close seat £148.17 (£178.00)

### Happening Kids'



347115000 WC pan £219.98 (£264.00)

801116004 Seat (white) £65.98 (£79.00)

801116714 Seat (yellow) £65.98 (£79.00)

### Inspira Round



347527000 WC pan £395.06 (£474.00)

80152200B Soft-close seat £169.31 (£203.00)

### Hall



347627000 WC pan £411.65 (£494.00)

801622004 Soft-close seat £130.01 (£156.00)

### Meridian-N



347247000 WC pan £354.07 (£425.00)

8012A2004 Soft-close seat £127.45 (£153.00)

8012A0004 Standard seat £94.36 (£113.00)

### Dama-N



347787000 WC pan £290.16 (£348.00)

801782004 Soft-close seat £126.61 (£152.00)

801780004 Standard seat £105.50 (£127.00)

The prices shown are recommended retail prices excluding VAT (including VAT is shown in brackets)

# Back-to-wall WCs



Comfort-height



Soft-close seat



4.5/3 litre flush



6/3 litre flush

Due to manufacturing processes all dimensions are approximate. Dimensions in mm.  
Where applicable, height dimensions for the WC pan do not include the seat dimensions and wall-hung WCs include the recommended installation height.

## Back-to-wall WCs

### Aire



3470F7000 WC pan **£285.97 (£343.00)**  
801B9200U Soft-close seat **£82.49 (£99.00)**

### Senso



347517000 WC pan **£280.58 (£337.00)**  
801512004 Soft-close seat **£119.82 (£144.00)**  
801511004 Standard seat **£96.17 (£115.00)**

### The Gap



347477000 WC pan **£240.22 (£288.00)**  
801472004 Soft-close seat **£105.81 (£127.00)**  
801470004 Standard seat **£80.08 (£96.00)**

### Nexo



347615000 WC pan **£228.38 (£274.00)**  
80164B004 Soft-close seat **£98.98 (£119.00)**  
801640004 Standard seat **£76.12 (£91.00)**

### Debba



347996000 WC pan **£220.91 (£265.00)**  
801992004 Soft-close seat **£98.82 (£119.00)**  
801990004 Standard seat **£56.77 (£68.00)**

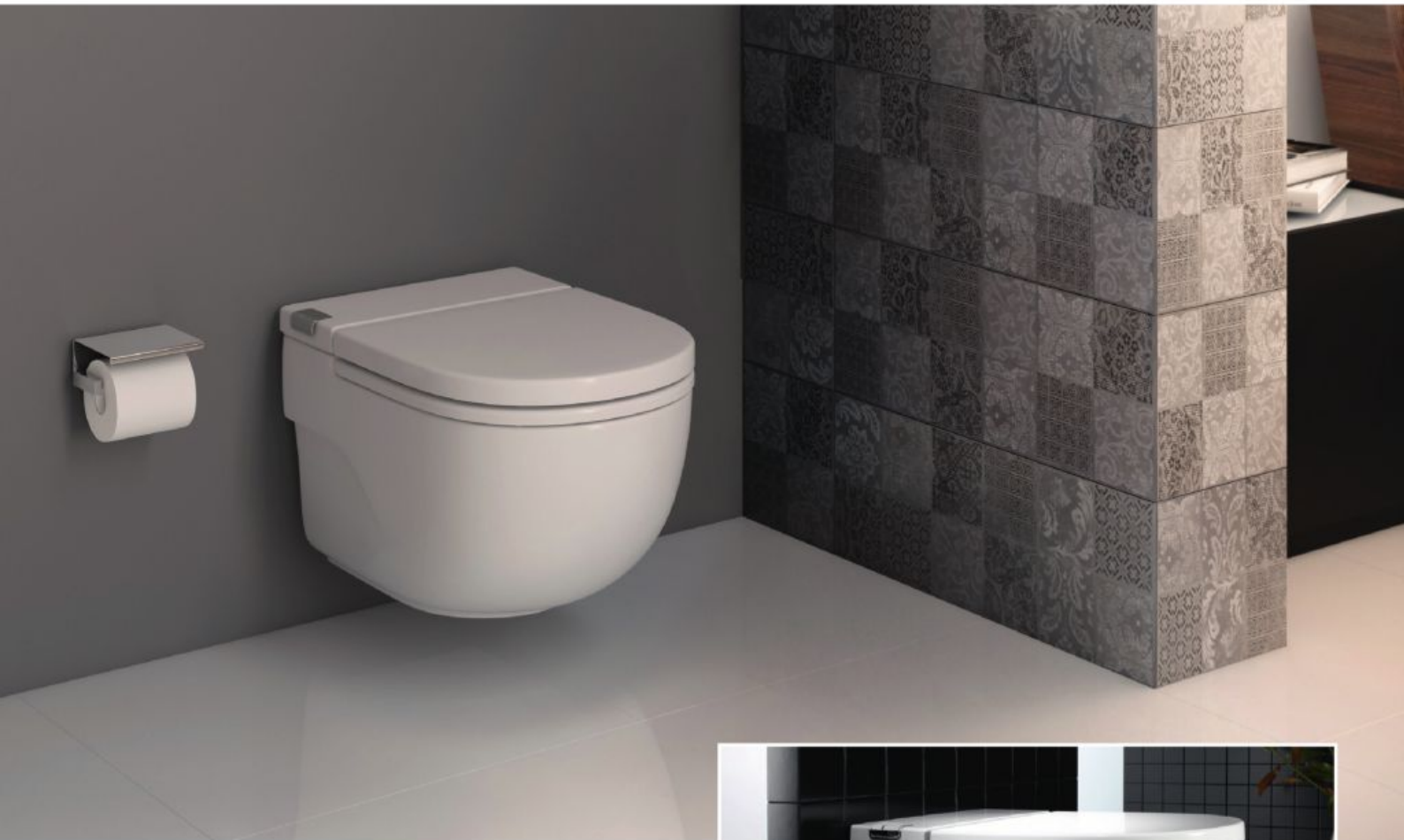
### Laura



347396000 WC pan **£199.28 (£239.00)**  
8013SC005 Soft-close seat **£80.70 (£97.00)**  
8013U0004 Standard seat **£46.36 (£56.00)**

# In-Tank

WC with integrated cistern



Roca revolutionises the world of the bathroom with In-Tank; a system that, for the very first time, integrates the cistern and flush system within the WC itself.

In-Tank offers an alternative installation solution; without the requirement for a concealed cistern or installation system to be installed due to its integrated cistern design, In-Tank saves space and installation time.

Easy to install, all components required for installation are supplied within one box.



Wall-hung WC



**893302000** WC pan, frame and soft-close seat (for solid walls) **£1,180.19 (£1,416.00)**

**893301000** WC pan, frame and soft-close seat (for stud walls) **£1,415.99 (£1,699.00)**

*Note: In-Tank WCs feature an integrated cistern, an installation system is included with the WC as standard*

Back-to-wall WC



**893303000** WC pan and soft-close seat **£1,180.19 (£1,416.00)**

*Note: In-Tank WC pan features an integrated cistern, an additional concealed cistern will not be required with this product*



## #2 Choose your installation system

### Installation systems for wall-hung WCs



Compact installation system with Dama-N wall-hung WC

A wall-hung WC requires an installation system which includes a concealed cistern and supporting steel frame, each installation system is capable of holding up to 400KG of weight.

#### Standard Bathroom Solution



##### Duplo WC Smart

890090800  
For Smart WCs only  
See page 21

##### Duplo WC

890090020  
See page 21

#### Compact Bathroom Solution



##### Duplo WC Compact

890080020  
See page 22

##### Basic WC Compact

890080110  
Solid wall installation only  
See page 22

#### Under-window Bathroom Solution



##### Duplo WC L

890121010  
820mm high  
See page 23

## Concealed cisterns for back-to-wall WCs



Basic Tank LH concealed cistern with Hall back-to-wall WC

A back-to-wall WC requires a concealed cistern only as the WC does not require any additional support when installed on the floor.

### Standard/compact Bathroom Solution



#### Basic Tank Compact

890080200  
For standard and compact bathroom spaces  
See page 24

### Under-window Bathroom Solution



#### Basic Tank LH

890121201  
910-980mm high - adjustable inlet pipe  
See page 24



#### Basic Tank L

890121200  
820mm high - fixed inlet pipe  
See page 25



# Installation systems

## Key features



All concealed cisterns are WRAS approved



Stainless steel frame capable of holding up to 400kg

Compact options are available, ideal for bathrooms with restricted space



Insulated cistern reduces condensation and noise levels when refilling the cistern



200,000 CYCLES

Quality assured, flush valve longevity of over 200,000 cycles offering long lasting performance

A choice of fixing points of 180mm or 230mm suiting all Roca WCs\*

\*excluding Duplo WC and Duplo WC Smart (180mm only)

Adjustable legs offering various installation heights for different floor types



Easy installation, all relevant fixing kits are included\*

Future maintenance can be easily performed through the operating panel



Guarantee of 5 years for the cistern and 10 years for the frame



A range of operating panels are available, including new electronic options

Suitable for low pressure areas - works at 0.1 to 10 bar\*  
\*excluding Duplo WC Smart

Dual flush valves can be set at 4.5/3 litres or 6/3 litres



A wide range of Roca wall-hung WCs are now available including rimless and smart WCs



# Installation systems

Compatible with wall-hung WCs

N

## Duplo WC Smart

890090800 £275.00 (£330.00)

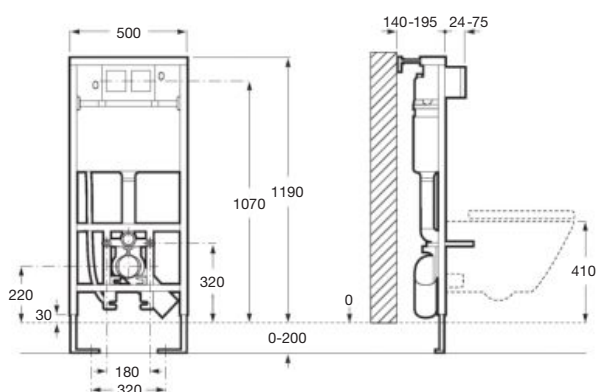
### Solution for Smart Toilets

- Suitable for solid or stud wall installation
- Includes 90-110mm waste adapter for floor exit
- ½" water supply connection
- Minimum installation depth of 140mm
- Pan fixing points of 180mm only
- Insulated cistern
- Adjustable feet 0-200mm
- Suitable working pressure 0.5-10 bar

### 110mm horizontal waste

892028000 £6.44 (£8.00)

To be used when installing the waste horizontally



## Duplo WC

890090020 £198.25 (£238.00)

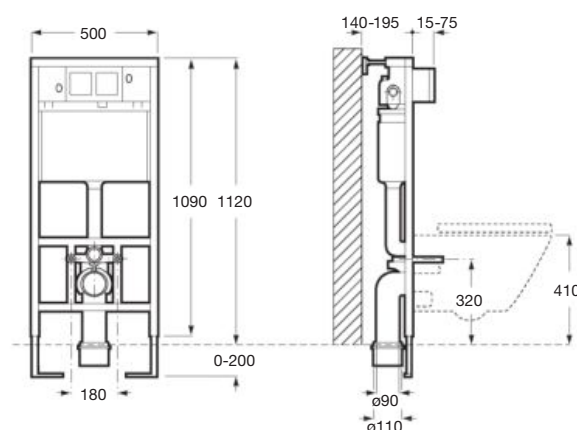
### Solution for standard bathroom spaces

- Suitable for solid or stud wall installation
- Includes 90-110mm waste adapter for floor exit
- ½" water supply connection
- Minimum installation depth of 140mm
- Pan fixing points of 180mm only
- Insulated cistern
- Adjustable feet 0-200mm
- Suitable working pressure 0.1-10 bar

### 110mm horizontal waste

892028000 £6.44 (£8.00)

To be used when installing the waste horizontally



Please see page 8-11 for compatible wall-hung pans, and pages 26-30 for compatible operating panels

The prices shown are recommended retail prices excluding VAT (including VAT is shown in brackets)

# Installation systems

Compatible with wall-hung WCs

## Duplo WC Compact

890080020 £198.25 (£238.00)

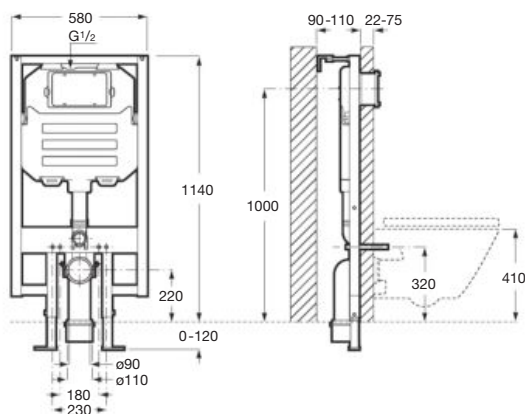
### Solution for compact bathroom spaces

- Suitable for solid or stud wall installation
- Includes 90-110mm waste adapter for floor exit
- ½" water supply connection
- Minimum installation depth of 90mm
- Pan fixing points of 180mm or 230mm
- Insulated cistern
- Adjustable feet 0-120mm
- Suitable working pressure 0.1-10 bar
- Waste pipe cannot be turned left or right

### 110mm horizontal waste

892028000 £6.44 (£8.00)

To be used when installing the waste horizontally



## Basic WC Compact

890080110 £169.94 (£204.00)

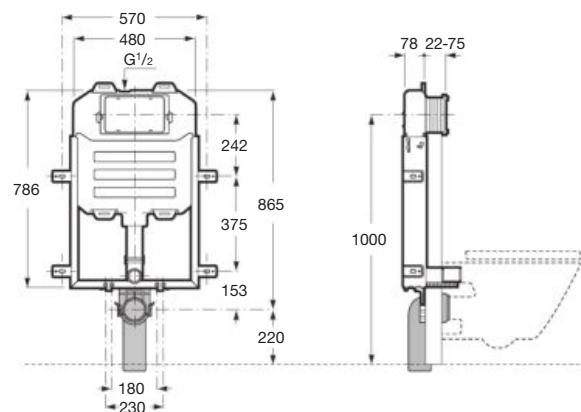
### Solution for compact bathroom spaces

- Suitable for solid wall installation only
- Includes 110mm floor exit waste
- ½" water supply connection
- Minimum installation depth of 78mm
- Pan fixing points of 180mm or 230mm
- Insulated cistern
- Suitable working pressure 0.1-10 bar

### 110mm horizontal waste

892028000 £6.44 (£8.00)

To be used when installing the waste horizontally



Please see page 8-11 for compatible wall-hung pans, and pages 26-30 for compatible operating panels



N

### Duplo WC L (under window - 820mm)

890121010 £198.25 (£238.00)

#### Solution for bathroom spaces with height restrictions

- Suitable for solid or stud wall installation
- Includes 90-110mm waste adapter for floor exit
- ½" water supply connection
- Operating panel can be installed at the front or on top of the cistern
- Minimum installation depth of 167mm
- Pan fixing points of 180mm or 230mm
- Insulated cistern
- Adjustable feet 0-200mm
- Suitable working pressure 0.1-10 bar

#### 110mm horizontal waste

892028000 £6.44 (£8.00)

To be used when installing the waste horizontally



## Installation system quick finder

### Standard bathroom solutions



#### Duplo WC Smart

890090800  
For Smart WCs only



#### Duplo WC

890090020

### Compact bathroom solutions



#### Duplo WC Compact

890080020



#### Basic WC Compact

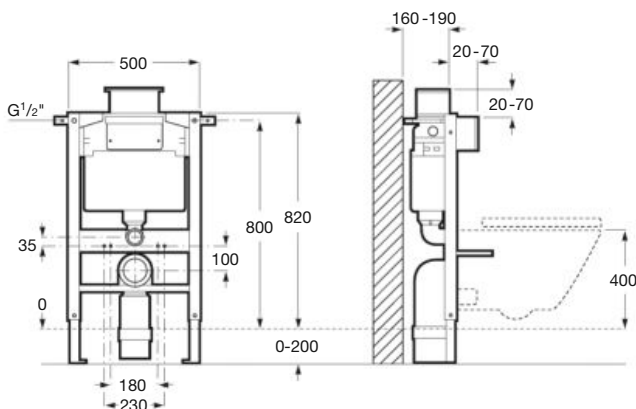
890080110  
For solid brick wall installation only

### Under-window bathroom solution



#### Duplo WC L

890121010





# Concealed cisterns

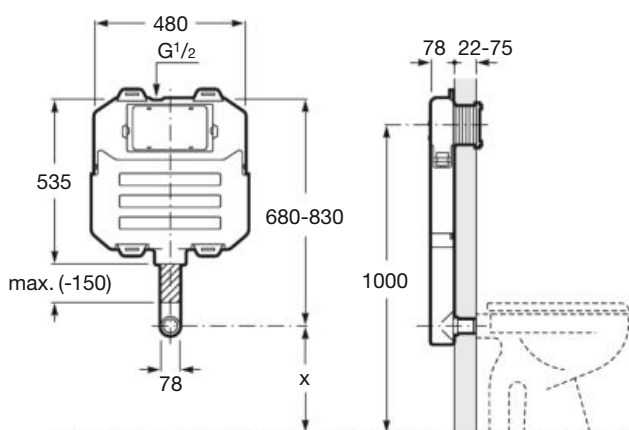
Compatible with back-to-wall WCs

## Basic Tank Compact

890080200 £96.30 (£116.00)

### Solution for standard and compact bathroom spaces

- Suitable for solid or stud wall installation
- 1/2" water supply connection
- Minimum installation depth of 78mm
- Insulated cistern
- Suitable working pressure 0.1-10 bar
- Adjustable inlet pipe of up to 150mm

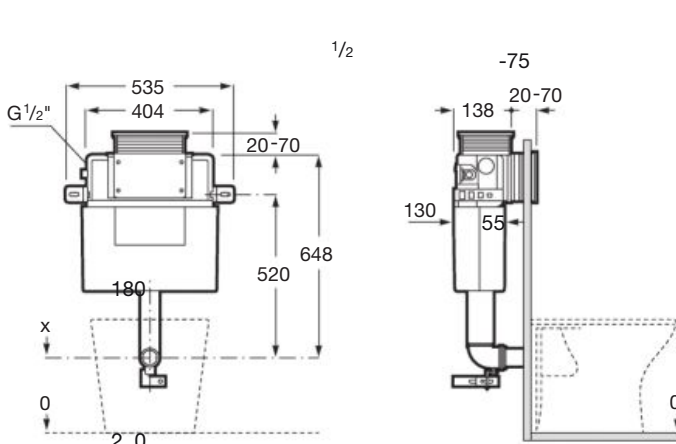


## Basic Tank LH (under window - 910-980mm with adjustable pipe)

890121201 £130.28 (£156.00)

### Solution for bathroom spaces with height restrictions

- Suitable for stud or solid wall installation
- Operating panel can be installed at the front or on top of the cistern
- 1/2" water supply connection
- Minimum installation depth of 158mm
- Insulated cistern
- Suitable working pressure 0.1-10 bar
- Adjustable inlet pipe of up to 70mm



Please see page 14-16 for compatible back-to-wall pans, and pages 26-30 for compatible operating panels



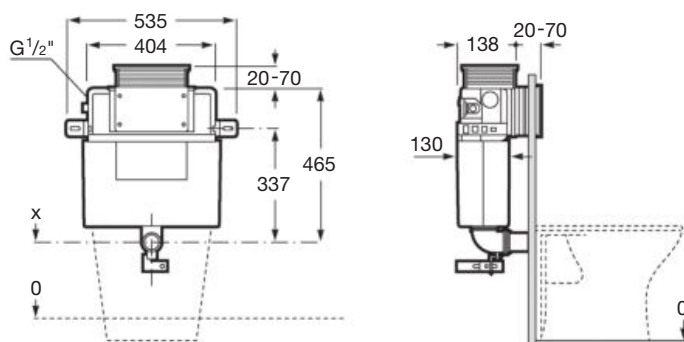
N

### Basic Tank L (under window - 820mm)

890121200 £130.28 (£156.00)

#### Solution for bathroom spaces with height restrictions

- Suitable for solid or stud wall installation
- 1/2" water supply connection
- Operating panel can be installed at the front or on top of the cistern
- Minimum installation depth of 158mm
- Insulated cistern
- Suitable working pressure 0.1-10 bar
- Fixed inlet pipe



## Concealed cistern quick finder

### Standard/compact bathroom solution



#### Basic Tank Compact

890080200

### Under-window bathroom solutions



#### Basic Tank LH

890121201

910-980mm high - adjustable inlet pipe



#### Basic Tank L












890121200

820mm high - fixed inlet pipe

# #3 Choose your operating panel

Compatibility information

CISTERNS FOR BACK-TO-WALL WCs		
		
Basic Tank Compact	Basic Tank LH - Adjustable	Basic Tank L
Standard/Compact	Under Window	Under Window
890080200	890121201	890121200
£96.30 (£116.00)	£130.28 (£156.00)	£130.28 (£156.00)






	Description	Code	RRP			
	Electronic EP1	890102008	£714.92 (£858.00)			
	Electronic EP1 - Compact	890103008	£714.92 (£858.00)	✓		
	Electronic EP2	890102009	Available Spring 2018 £714.92 (£858.00)			
	Electronic EP2 - Compact	890103009	Available Spring 2018 £714.92 (£858.00)	✓		
	PL1	890095... 000 white 001 chrome 002 grey lacquer 005 combi	£35.12 (£42.00) £38.52 (£46.00) £38.52 (£46.00) £38.52 (£46.00)	✓	✓	✓
	PL2	890096... 000 white 001 chrome 002 grey lacquer 005 combi	£35.12 (£42.00) £38.52 (£46.00) £38.52 (£46.00) £38.52 (£46.00)	✓	✓	✓
	PL3	890097004	£118.95 (£143.00)	✓	✓	✓
	PL4	890098... 000 white 001 chrome 002 grey lacquer 005 combi	£40.78 (£49.00) £46.45 (£56.00) £46.45 (£56.00) £46.45 (£56.00)	✓	✓	✓
	PL5	890099... 000 white 001 chrome 002 grey lacquer 005 combi	£40.78 (£49.00) £46.45 (£56.00) £46.45 (£56.00) £46.45 (£56.00)	✓	✓	✓
	PL6	890085... 000 white 001 chrome 002 grey lacquer 005 combi	£40.78 (£49.00) £46.45 (£56.00) £46.45 (£56.00) £46.45 (£56.00)	✓	✓	✓
	PL7	890088... 206 matt black 207 matt white 308 glass black 309 glass white	Available Spring 2018 £44.86 (£54.00) £44.86 (£54.00) £56.08 (£67.00) £56.08 (£67.00)	✓	✓	✓

Panel finish options: **Substitute...** in the reference with the code for the chosen panel finish

The prices shown are recommended retail prices excluding VAT (including VAT is shown in brackets)



# INSTALLATION SYSTEMS FOR WALL-HUNG WCs

<div> <div>N</div>     <div>N</div>  </div>				
Duplo WC Smart*	Duplo WC	Duplo WC Compact	Basic WC Compact	Duplo WC L
Standard	Standard	Compact	Compact	Under Window
890090800	890090020	890080020	890080110	890121010
£275.00 (£330.00)	£198.25 (£238.00)	£198.25 (£238.00)	£169.94 (£204.00)	£198.25 (£238.00)
✓	✓			
		✓	✓	
✓	✓			
		✓	✓	
✓	✓	✓	✓	✓
✓	✓	✓	✓	✓
✓	✓	✓	✓	✓
✓	✓	✓	✓	✓
✓	✓	✓	✓	✓
✓	✓	✓	✓	✓
✓	✓	✓	✓	✓

\* Note: Duplo WC Smart is compatible with In-Wash® Inspira WC only

# Electronic operating panels



Automatic flush



Touch free



Motion sensor



Four colour options



Mains operated



New Product

Electronic operating panels can be personalised with the choice of four different LED colour finishes and various operating functions, such as auto-flush, pre-flush and touch-free flush options.

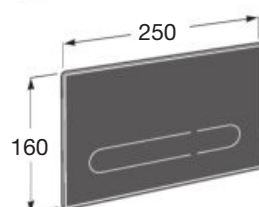


## EP-1 Dual Flush

890102008 Standard £714.92 (£858.00)

890103008 Compact £714.92 (£858.00)

Compatible with all installation systems and concealed cisterns including under-window options



Different colour functions

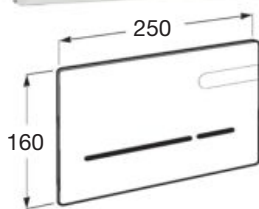


## EP-2 Dual Flush - Available Spring 2018

890102009 Standard £714.92 (£858.00)

890103009 Compact £714.92 (£858.00)

Compatible with all installation systems and concealed cisterns excluding under-window options



Different colour functions



In-Wash® Inspira wall-hung WC with EP-1 operating panel

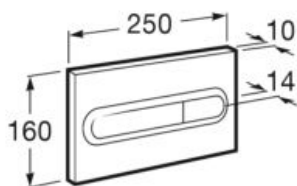
The prices shown are recommended retail prices excluding VAT (including VAT is shown in brackets)

# Standard operating panels

## PL1 Dual Flush

890095000 White (1) £35.12 (£42.00)  
 890095001 Chrome (2) £38.52 (£46.00)  
 890095002 Grey lacquer (3) £38.52 (£46.00)  
 890095005 Combi (White/Grey) (4) £38.52 (£46.00)

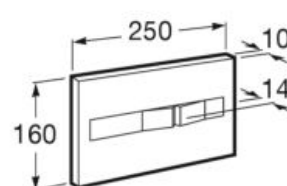
Compatible with all installation systems and concealed cisterns



## PL2 Dual Flush

890096000 White (1) £35.12 (£42.00)  
 890096001 Chrome (2) £38.52 (£46.00)  
 890096002 Grey lacquer (3) £38.52 (£46.00)  
 890096005 Combi (White/Grey) (4) £38.52 (£46.00)

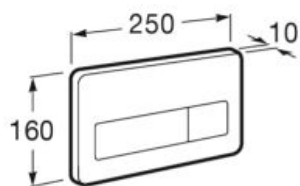
Compatible with all installation systems and concealed cisterns



## PL3 Dual Flush

890097004 Anti-vandal plate stainless steel £118.95 (£143.00)

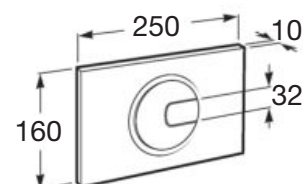
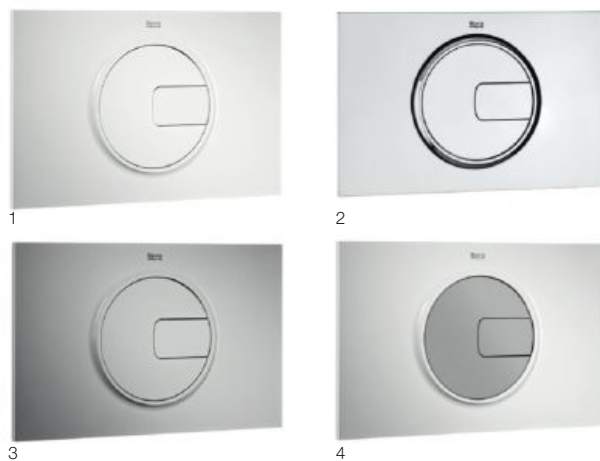
Compatible with all installation systems and concealed cisterns



## PL4 Dual Flush

890098000 White (1) £40.78 (£49.00)  
 890098001 Chrome (2) £46.45 (£56.00)  
 890098002 Grey lacquer (3) £46.45 (£56.00)  
 890098005 Combi (White/Grey) (4) £46.45 (£56.00)

Compatible with all installation systems and concealed cisterns



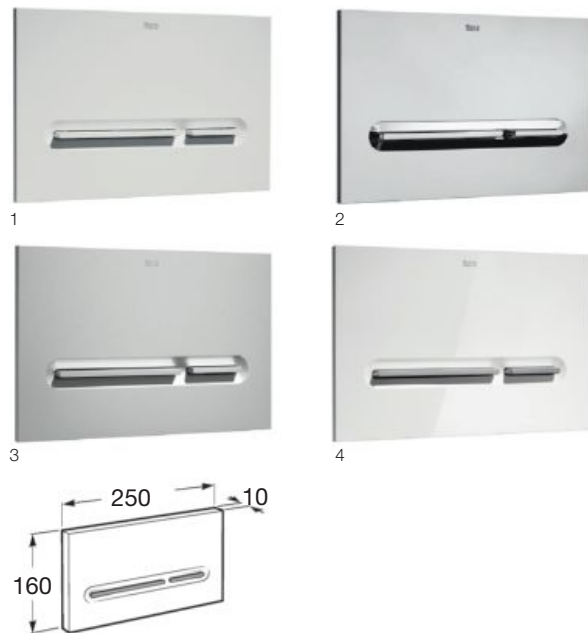


# Standard operating panels

## PL5 Dual Flush

890099000 White (1) **£40.78 (£49.00)**  
 890099001 Chrome (2) **£46.45 (£56.00)**  
 890099002 Grey lacquer (3) **£46.45 (£56.00)**  
 890099005 Combi (White/Grey) (4) **£46.45 (£56.00)**

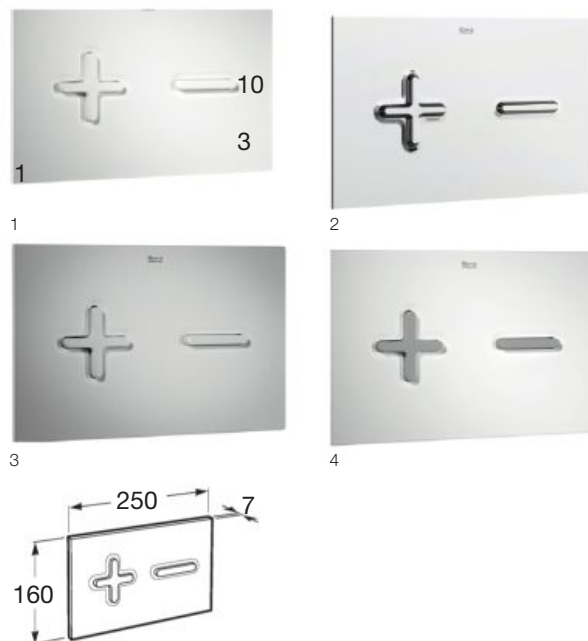
Compatible with all installation systems and concealed cisterns



## PL6 Dual Flush

890085000 White (1) **£40.78 (£49.00)**  
 890085001 Chrome (2) **£46.45 (£56.00)**  
 890085002 Grey lacquer (3) **£46.45 (£56.00)**  
 890085005 Combi (White/Grey) (4) **£46.45 (£56.00)**

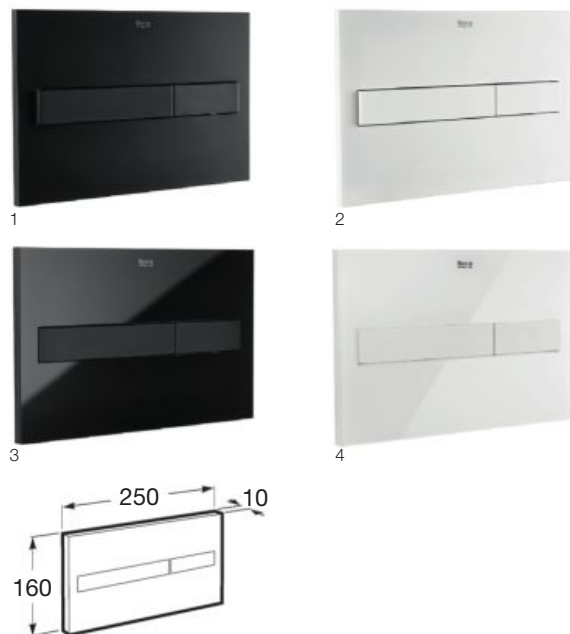
Compatible with all installation systems and concealed cisterns



## PL7 Dual Flush - Available Spring 2018

890088206 Matt black (1) **£44.86 (£54.00)**  
 890088207 Matt white (2) **£44.86 (£54.00)**  
 890088308 Black with glass finish (3) **£56.08 (£67.00)**  
 890088309 White with glass finish (4) **£56.08 (£67.00)**

Compatible with all installation systems and concealed cisterns

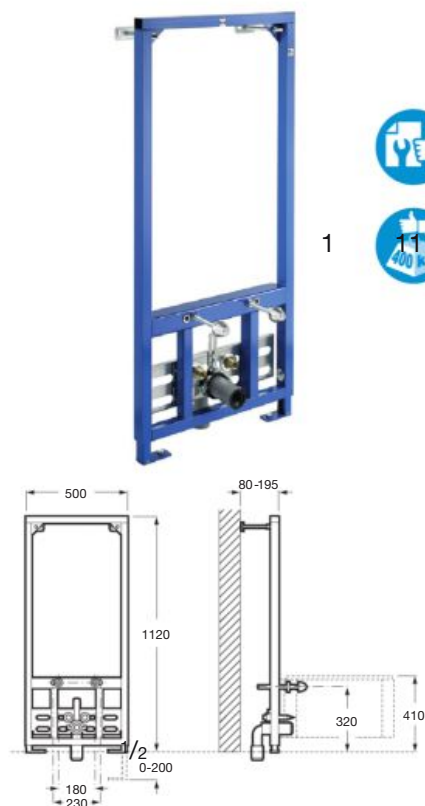


# Additional installation systems

## Duplo Bidet

890091200 £228.61 (£274.00)

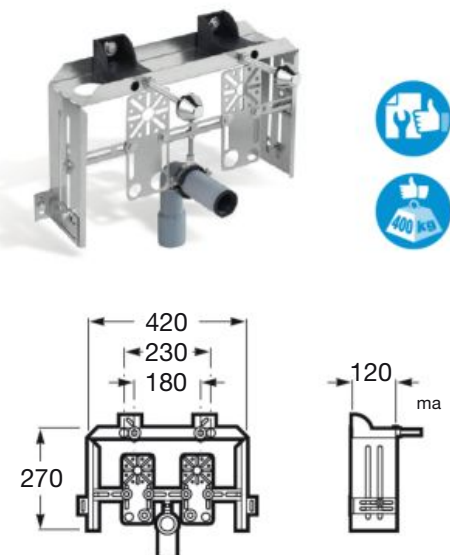
- Designed to hold wall-hung bidets
- Minimum installation depth of 80mm
- Suitable for solid or stud wall installation
- Adjustable leg supports 0-200mm
- Fixing points of 180mm and 230mm



## Basic Bidet

890091100 £163.93 (£197.00)

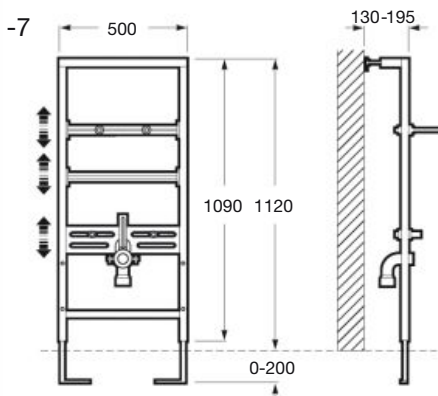
- Suitable for wall-hung bidets
- Installation depth required of 120mm
- Suitable for solid brick wall installation only
- Fixing points of 180mm and 230mm



## Duplo Washbasin

890093000 £228.61 (£274.00)

- Minimum installation depth of 130mm
- Maximum weight load of 150KG
- Suitable for solid or stud wall installation
- Adjustable leg supports 0-200mm
- Height and width adjustable fixing points for precise installation



80 1/2 22 75

68 -8

000

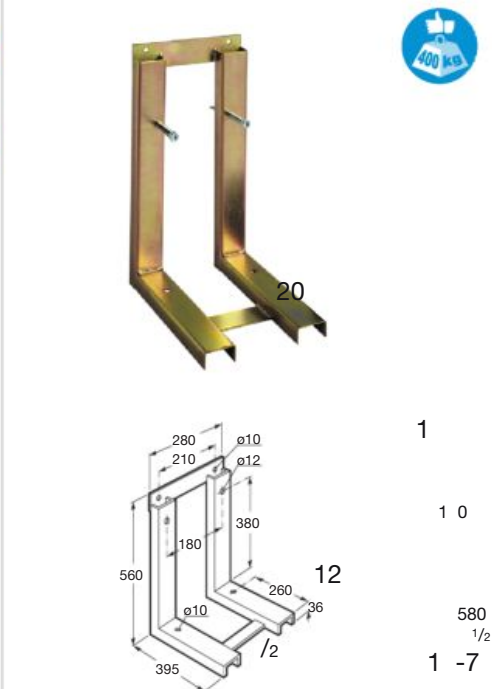
7

0-1 5 -7

## Basic Frame

822091001 £151.05 (£181.00)

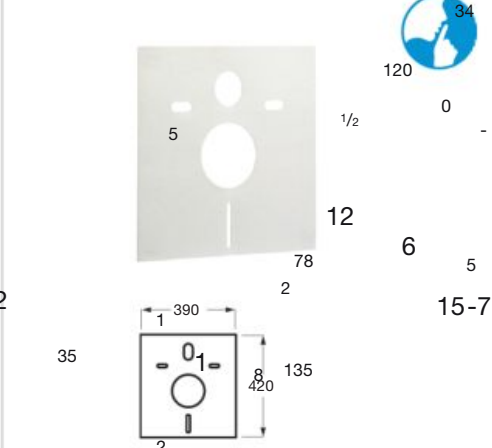
- Compatible with concealed cisterns without frames providing an additional wall-hung solution
- To be used with wall-hung WCs or wall-hung bidets
- Pan fixing points of 180mm only
- Minimum installation depth for wall and floor is 40mm
- Suitable for solid or stud wall installation



## Silent In-Wall

890063000 £16.99 (£20.00)

- Sound insulation mat suitable for all Roca wall-hung WCs and bidets
- Reduces noise levels caused by solid structures in mechanisms
- Compatible with pans featuring fixing points of 180mm or 230mm



**Roca Ltd**

Samson Road, Hermitage Ind. Estate,  
Coalville, Leicestershire, LE67 3FP  
Tel: 01530 830 080  
Fax: 01530 830 010  
[www.uk.roca.com](http://www.uk.roca.com)

**Roca Ireland**

Unit 628A, Jordanstown Avenue,  
Greenogue Industrial Estate,  
Rathcoole,  
County Dublin  
Telephone: (01) 401 9340

[www.uk.roca.com](http://www.uk.roca.com)