

Ohtake

Organic Character



“The design is like the sea horizon,
recalls the movement of water,
of waves, the ocean, elements of Nature.”

Osamu Okabe

Copacabana Beach,
Rio de Janeiro, Brazil



The organic shapes found in Nature were a constant source of inspiration for the late, legendary Brazilian architect Ruy Ohtake. Curving surfaces and round, voluptuous shapes were essential to his design vocabulary. He often remarked how his goal with his designs was to awaken the senses and to establish a connection with the end user that would go beyond the basic utilitarian function being fulfilled. Ohtake's ambition was to create something that would enrich the user's everyday life, even if for just a brief moment.

Those daring curves and the organic character of his work made him an ideal guest collaborator for Roca. Ohtake's close attention to the execution and detailing of his designs, no matter what scale, perfectly aligned him with Roca's commitment to craftsmanship excellence.

In developing the collection, the architect found inspiration in an unexpected most primordial item: the egg. "The egg is something of an exceptional quality, with its high rigidity even with such a thin skin!", he would comment. Seeing a correlation between the lightness of the egg skin and Roca's Fineceramic material, he applied cutting edge technology to achieve the ultra-thin borders he had envisioned for his sculptural designs for the collection.

The resulting pieces feature Ruy's signature sensual shapes, with undulating edges and outlines, resembling more a walk on the beach than simply a basin container. As he would say: "A good piece of Architecture, of design, must have an element of unpredictability, of emotion".

That first washbasins collection, timeless in its sleek aesthetic, would go on to receive the prestigious Red Dot Design Award 2019 for the way it fused "technology, functionality and aesthetics come together in a symbiotic way" (as mentioned in the award statement).

Now the Ohtake collection is being expanded with the addition of fresh new designs by Ohtake's son, architect and designer Rodrigo Ohtake, continuing in this way the fruitful collaborative history between the Ohtake's and Roca. Leading the Ohtake office since his father's passing, Rodrigo is following in his footsteps while also expanding the practice and infusing it with a contemporary sensibility. For him too, the natural exuberance of the Brazilian landscape, present even in a major urban megalopolis like São Paulo, is a constant source of inspiration and an essential element of his design process. Whether the colors or the shapes or simply its atmosphere and layers, Rodrigo's designs are finely tuned with the ecological universe that surrounds him.

"Living with Art and Nature makes life gentler, softer", states Rodrigo. The designer certainly knows about coexisting with both Art and Nature, having grown up amidst the prolific cultural environment of his father's designs and the artworks of his grandmother, the pioneer Asian Brazilian artist Tomie Ohtake. Not surprising, Art for him is, well, second nature. Bringing both his and his father's experience full circle, Rodrigo is imbuing the office with a contemporary take, interested as much in creating unique architectural experiences as crafting one of a kind signature design pieces and even confronting the challenges of mass production of design.

> Next page: Ohtake
over countertop basin
in matt black with Ona
basin mixer, XL-Size in
matt black, Luna frame
ambient mirror





For his debut contribution to the Ohtake Collection, Rodrigo wanted to create designs that were inviting for the user to engage with. Thus, he took Ruy's celebrated curves and opened them up, softening the forms and extending the basins shape, as if a hand outreached in to collect water. The refined, lighter design owes its poetic inspiration to the delicate forms of the calla lily flower), and was developed quite literally with a hands-on approach. To find the ideal shapes he wanted, Rodrigo worked (you can even say played) with mini dough maquettes, in a creative tour de force not unlike his grandmother's Tomie artistic creations. Adding to the visual appeal of the design, the two new wash basins will be available in black, white and a new terracotta finish. The resulting sculptural objects were recognized for their originality with the "Best in Show" award at the 2023 Expo Revestir, the yearly design event that takes place in São Paulo.

To further compliment the collection, Rodrigo dug into his ancestor's heritage to bring back the Japanese art of bathing with the introduction of a Furo soaking tub. Infusing tradition with a fresh, modern take, the design creates a perfect setting intended to induce as much an experience of relaxing Zen ritual as one of cleansing.

Altogether, the combined pieces by Ruy and Rodrigo make for a carefully curated Ohtake collection that brings both designers' interest in art and Nature full circle into a cohesive collection. Fluid lines, daring free forms, all coming together into a sophisticated design that challenges the usual perceived expectations to create an environment that favors the sensorial in the everyday activity. Thus, the successful creative friendship between the Ohtakes and Roca continues to blossom, a personal connection fostering new design projects, ideas, talks, seminars, exhibits, masterclasses, and awards in a warm, collaborative spirit.

> Previous page:
Ohtake over countertop
basin in matt white
with Ona basin mixer,
XL-Size in matt black



EducaMais, Jacareí,
São Paulo, Brazil

> Next page: Ohtake
over countertop basin
in matt black

>> Next spread: Studio &
Residence Tomie Ohtake,
São Paulo, Brazil

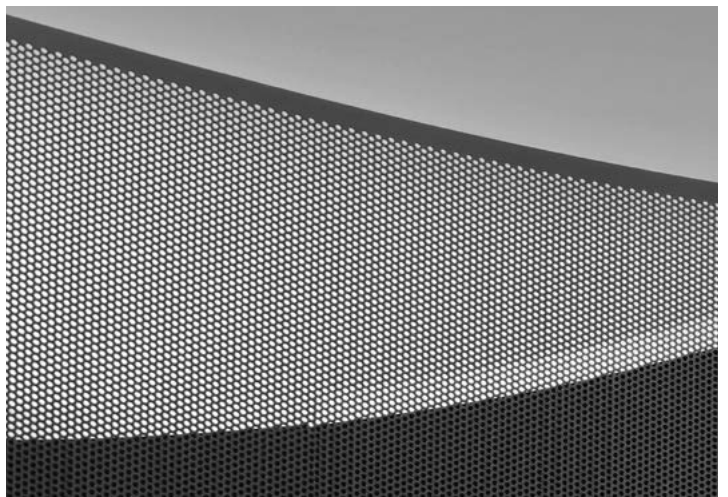












Rodrigo Ohtake House
Ibiúna, São Paulo, Brazil

Ohtake over countertop
basin in matt white
Ona basin mixer, XL-Size
in matt black

>> Next spread: Rodrigo
Ohtake House Ibiúna,
São Paulo, Brazil







Ohtake over countertop basin in matt black with Ona basin mixer, XL-Size in matt black



Ohtake over countertop basin in terracotta with Ona basin mixer, XL-Size in matt black, Luna frame ambient mirror









Ohtake over countertop basin in matt black with Ona basin mixer, XL-Size in matt black

Ohtake over countertop basin in matt black with Ona basin mixer, XL-Size in matt black, Luna frame ambient mirror, Hotels accessories in matt black





< Previous page:
Rodrigo Ohtake
House Ibiúna,
São Paulo, Brazil

Private Residence ,
Brasília, Brazil

> Next page: Ohtake
over countertop basin in
glossy white, Ona built-in
basin mixer in matt black,
Inspira close-coupled
back to wall WC, Hotels
accessories in matt black



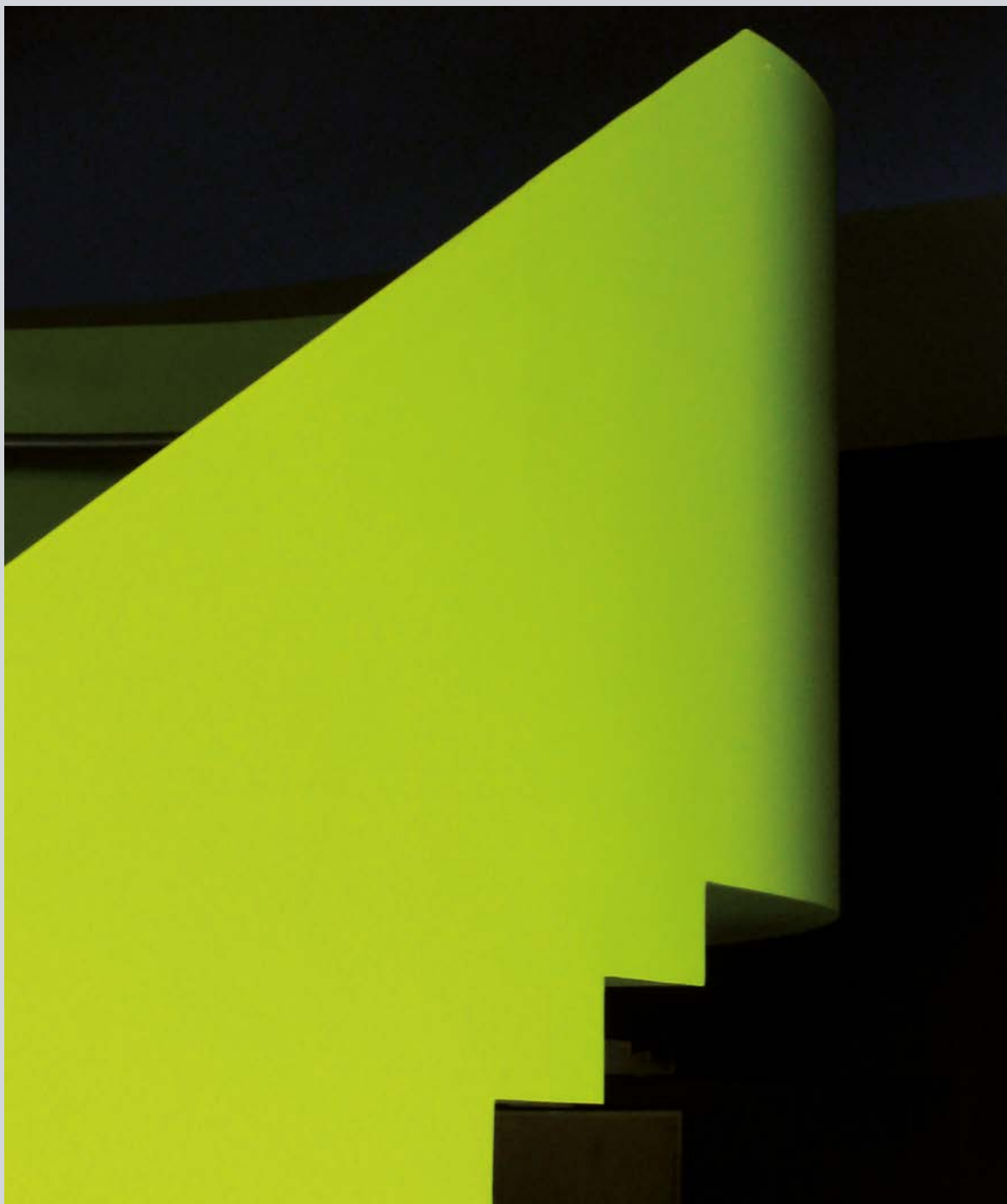




< Previous page: Ohtake
over countertop basin
in matt white, Ona basin
mixer, XL-Size in matt
black, Luna frame ambient
mirror, Hotels round
accessories in matt black

Ohtake over countertop
basin in matt white, Ona
basin mixer, XL-Size in
matt black, Hotels round
accessories in matt black





EducaMais, Jacareí,
São Paulo, Brazil

> Next page: Ohtake
over countertop basin
in matt white with Ona
basin mixer, S-Size in
matt black

>> Next spread: Ohtake
over countertop basins
in matt white with Ona
basin mixers, S-Size in
matt black













Rodrigo Ohtake house
Ibiúna, São Paulo, Brazil

> Next page: Ohtake basin
in terracotta, Ona built-in
faucet in matt black, Luna
frame ambient mirror



Ohtake over countertop basin in black with Ona basin mixer, XL-Size in matt black, Ohtake bath, Ona floorstanding bath column in matt black, Ona compact WC in matt black, Luna frame ambient mirror, Hotels Accessories in matt black

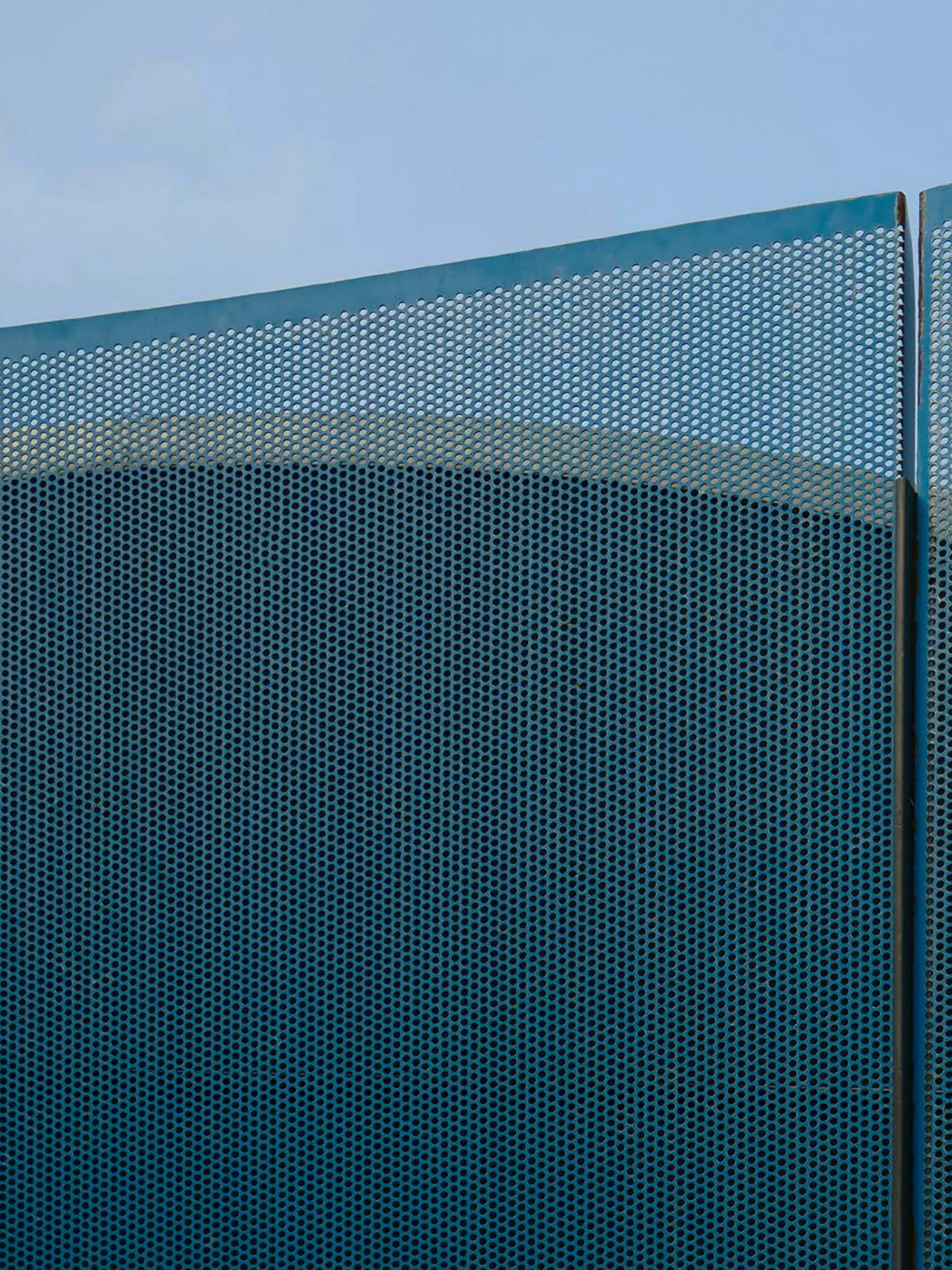
>> Next spread: Ohtake bath

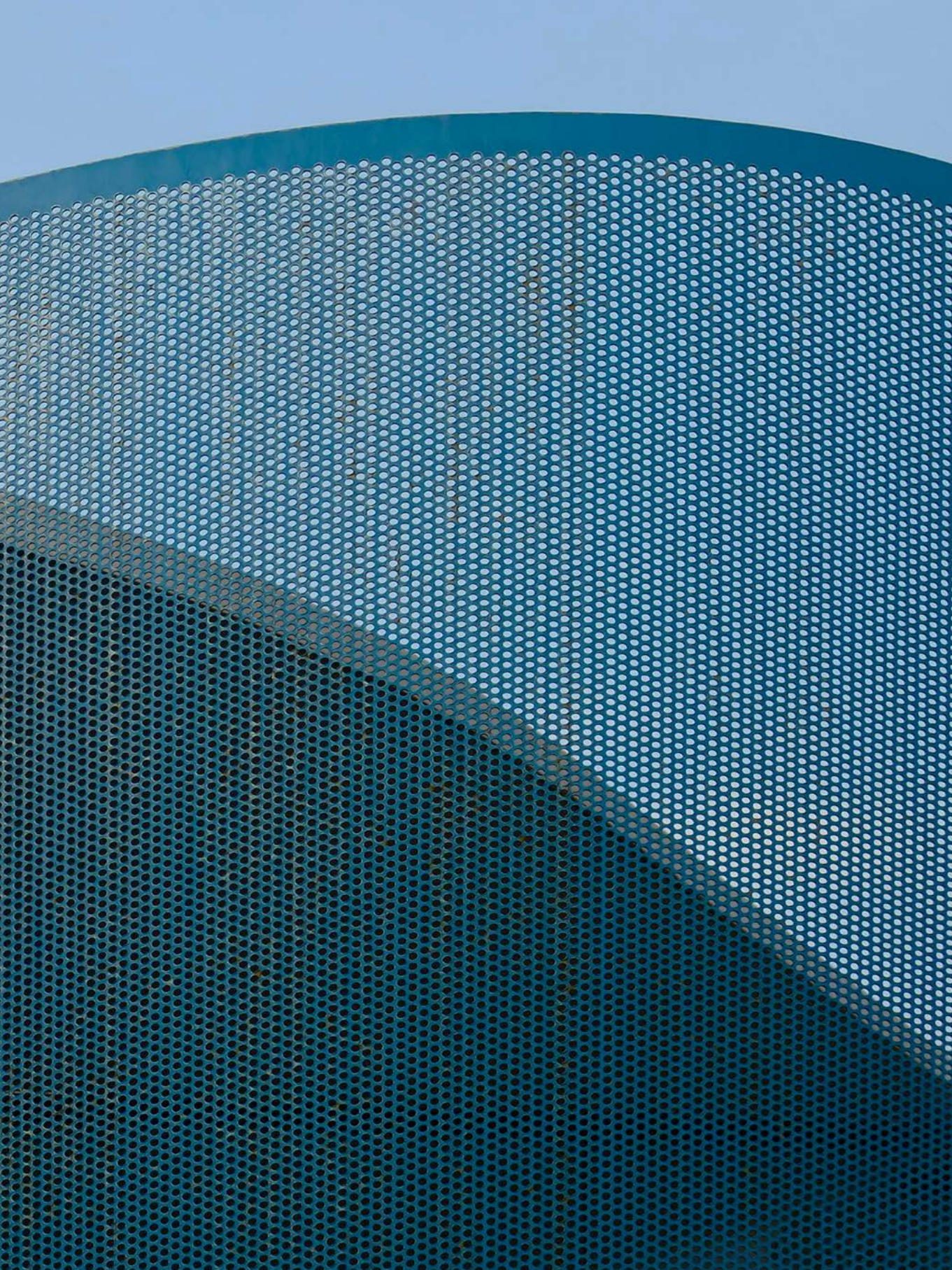














<< Previous spread:
Rodrigo Ohtake
house Ibiúna,
São Paulo, Brazil

< Previous page: Ohtake
bath, Ona floorstanding
bath column in matt black

Rodrigo Ohtake house
Ibiúna, São Paulo, Brazil







Technical Information



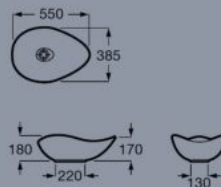
Ohtake in countertop
basin in matt white

Basins

Over countertop Fineceramic® basin

550 x 385 mm

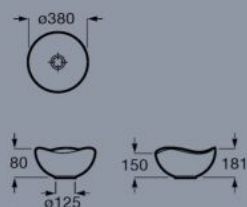
A327A13..0



Over countertop Fineceramic® basin

Ø380 mm

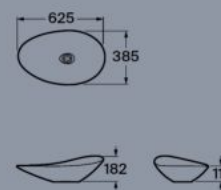
A327A15..0



Over countertop Fineceramic® basin

625 x 385 mm

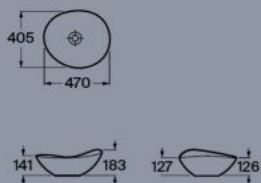
A327A1P..0



Over countertop Fineceramic® basin

470x 405 mm

A327A1N..0



Dimensions in mm. Replace (..) in the product reference with the code of the chosen finish.

Basin finishes:  00 White  62 Matt White  65 Beige  66 Coffee  64 Onyx  08 Matt Black  TC Terracotta

Bathtub

In countertop Fineceramic® basin with
faucet bank

620 x 445 mm

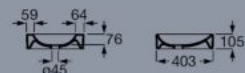
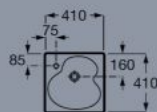
A327A16..0



Over countertop basin with faucet bank

410 x 410 mm

A327A14..0



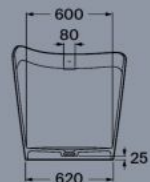
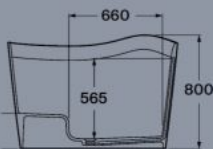
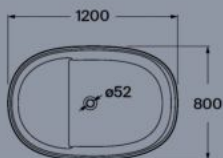
Stonex® freestanding bath

1200 x 800 mm

A248722..0

Step element for easy access
into the bathtub

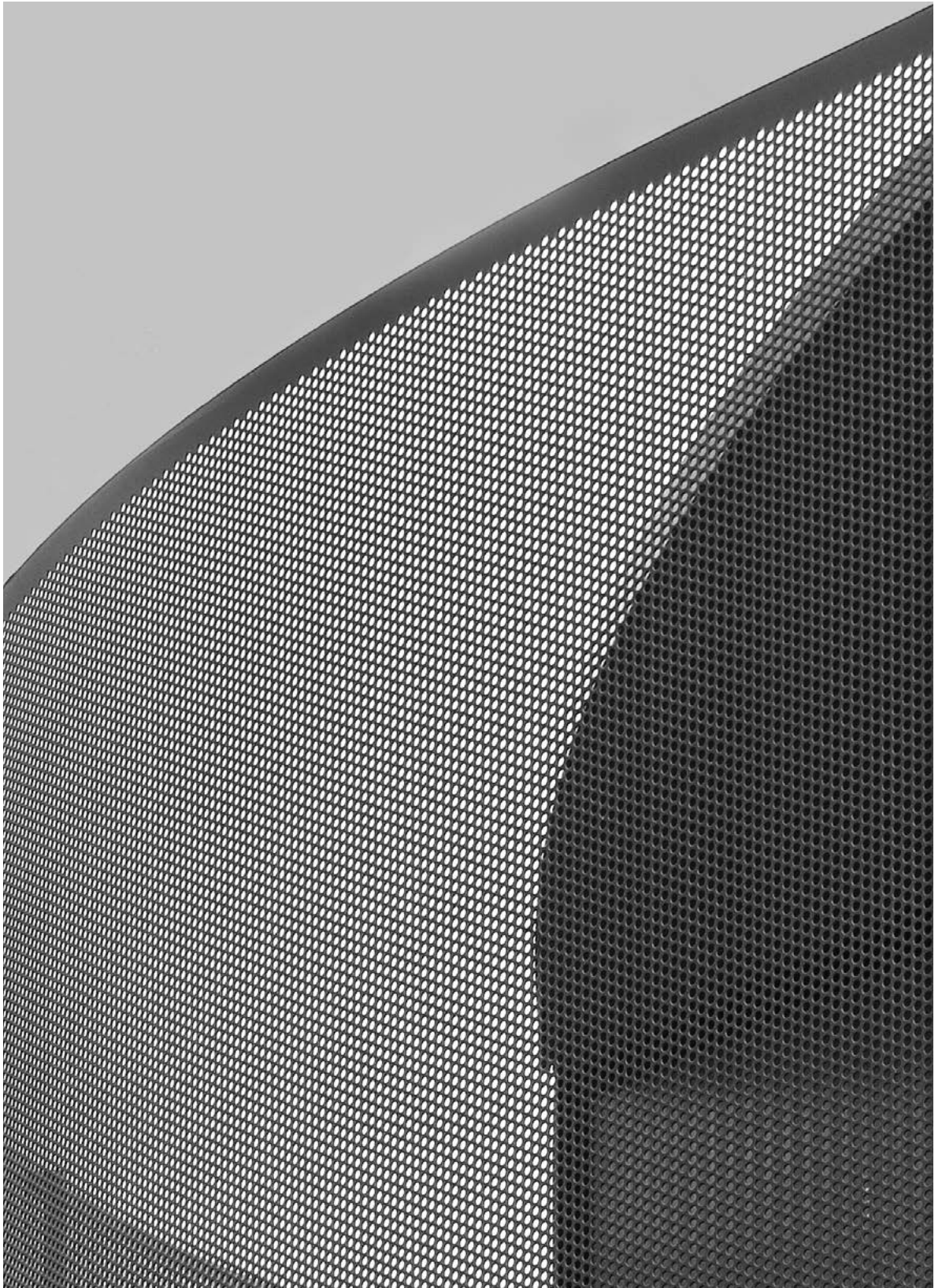
A248787



Dimensions in mm. Replace (..) in the product reference with the code of the chosen finish. Bath Finishes:

Basin Finishes: 00 White 62 Matt White 65 Beige 66 Coffee 64 Onyx 08 Matt Black TC Terracotta

Bath Finishes: 00 White OK Matt Black 63 Pearl







RUY OHTAKE



Born in Brazil, the son of Japanese-Brazilian Tomie Ohtake, one of Brazil's leading artists, Ohtake grew up in a highly cultured environment, exposed to the world of art and design. He studied Architecture in São Paulo, under João Vilanova Artigas, worked with Oscar Niemeyer, and then went on to establish his own practice, designing over 400 buildings throughout his long career, many of them in his hometown, the city of São Paulo. Among his career highlights are the house/studio designed for his mother, in the early days of his office, and the half-circle shaped Hotel Unique, considered by many an icon of the Brazilian boom of the 2000's and his years long collaboration with the community of the Heliópolis favela. A multi-faceted designer, Ohtake was also known for his product designs, bringing his originality and whimsical creations to one of furniture pieces, commercial collections, table-top items, and rugs creations.

An enthusiastic speaker, he was a well sought-after lecturer, travelling both domestically and abroad for speaking engagements.

He was the recipient of many national and international awards and honors, including the "Best of the Best" Red Dot Design Award in 2019 for his design for Roca's Ruy Ohtake Collection. He passed away in November 2021, at the age of 83 and since then his office is led by his son, architect and designer Rodrigo Ohtake.

RODRIGO OHTAKE



Born in São Paulo, Brazil, and the son of legendary Brazilian architect Ruy Ohtake, Rodrigo graduated from the Architecture program of the University of São Paulo and complimented his studies at the renown Politecnico di Milano. He collaborated with several international architects before starting his own design firm. Since the beginning of his career product and furniture design has been a staple of Rodrigo's output and seen by the designer as an intrinsic extension to his projects and has exhibited his designs in high profile events all over the world.

Since Ruy Ohtake's passing, Rodrigo has fused both his and Ruy's practices together into the OHTAKE office, a multidisciplinary studio focusing on architecture, design, urbanism, and innovative materials and technology resources. Bringing both his and his father's experience full circle, Rodrigo is imbuing the office with a contemporary take, interested as much in creating unique architectural experiences as crafting one of a kind signature design pieces as much as confronting the challenges of mass production of design.

His designs for Roca received the "Best in Show" award at the 2023 Expo Revestir, a yearly design event that takes place in São Paulo, and in 2025 the prestigious international iF AWARD.

RUY TEIXEIRA

Product photography

Ruy Teixeira is Brazilian photographer, specialized in design and architecture. He collaborated extensively with Ruy Ohtake documenting his projects through the years and on a volume about Ohtake's work. His work is regularly featured in lifestyle, design and architecture magazines like Casa Vogue Brazil, Elle Décor and many others. Beyond that, his images have been featured in many books and exhibits.

PAUL CLEMENCE

Text, architecture photography

An architect by training, Paul Clemence is an American-Brazilian artist, writer and photographer focusing on the subjective aspects of Architecture and design. A creative nomad, Clemence travels all over the world, capturing new and classic, iconic works of architecture. He has collaborated with Ruy Ohtake through both his writing and photography. And in 2016 Ohtake's red pool above the Hotel Unique was the subject of Clemence's "Red Interlude" installation at the Venice Architecture Biennale collateral exhibit Time Space Existence. A published author, his writing can be found on top design and architecture publications and his artwork exhibited in galleries and cultural events all over the world, like Milan's Fuori Salone, ArtBasel/DesignMiami, IAD/India and NYCxDDesign. He is currently based in Brooklyn, New York.



Direction
Roca

Art & Creative Direction
Clase



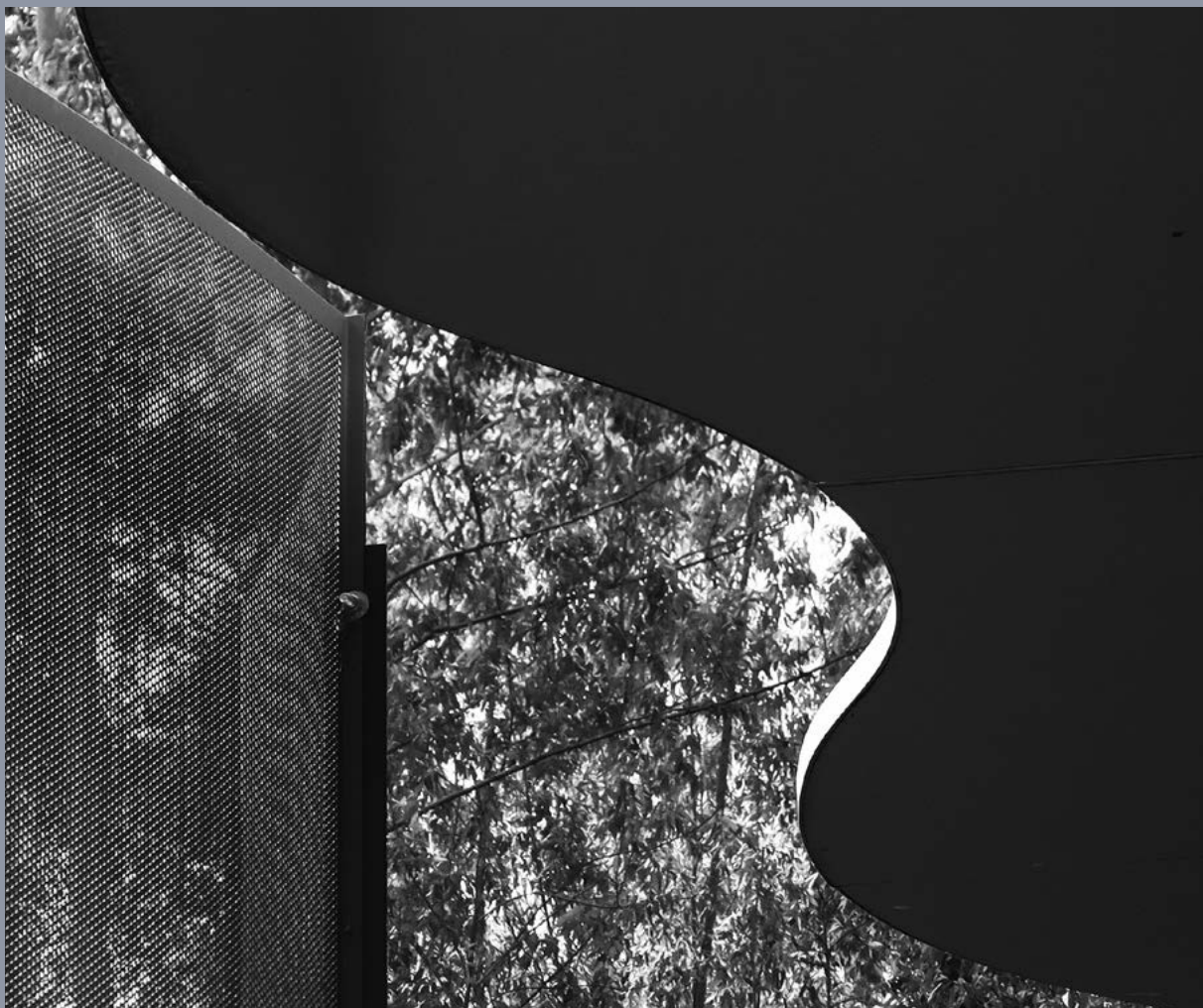
© Roca Sanitario S.A.U. Barcelona 2025

Avda. Diagonal 513, 08029 Barcelona, Spain

As part of its product development policy, Roca reserves the right to modify at any time and without prior notice, any of the models and elements described in this document; Roca therefore does not guarantee the availability of those products nor does it ensure that the specifications, colors, shapes and other reproduced features are identical to the real ones. The displayed settings are merely decorative, and no technical requirements have been taken into consideration while composing them. Total or partial reproduction of the content of this publication without Roca's express authorization is prohibited.

Not all products are available in all countries.

roca.com



Ohtake
Collection



@roca_global



@roca



@rocaglobal

Roca